

RESPONSIVE

We listen. We're responsive.

Canopus Plus®

Anti-Slip - Phthalate Free

2018



Special Features



Applications

- Transport
- Airports
- Ramps
- Elevated Corridor access
- Lift areas and entrances
- Kitchens or wet areas
- Industrial locations
- Trains
- Ferries

Product Description

Canopus Plus® is an anti-slip flexible vinyl floor covering 2.00 mm thick with silicon carbide particles for a decorative effect and R11 slip resistant properties. The product has a 1.00 mm wear layer and is reinforced with a glass fibre grid for better dimensional stability.

The SureClean™ surface treatment replaces wax and polish after installation without reducing the anti-slip properties of the flooring and provides a high level of chemical resistance and ease of maintenance.

Canopus Plus® is antifungal and antibacterial, complies with the EN 649 norm (34 - 43) and has a group T wear rating.

Canopus Plus® is suitable for transport applications in buses, trains, ships and airplanes. It is also applicable for non-slip performance in most commercial and industrial areas. It is the ideal solution for heavy traffic applications where enhanced slip resistance, durability, hygiene and aesthetic beauty are required.

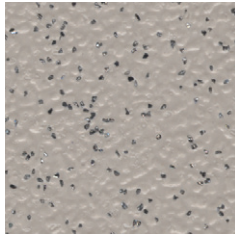
Canopus Plus® is VOC (≤ 12 Chronic REL) and formaldehyde compliant ($\leq 9.0 \mu\text{g}/\text{m}^3$) according to the CDPH/EHLB/Standard, Method V1.1-2010 (certificate 120316-01).



Safety First

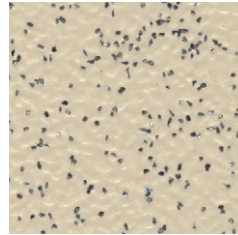
Robust and reliable, Canopus Plus® is the safety floor of choice where tough performance and durability are most important. With a R11 slip rating, Canopus Plus® is suitable for industrial specification where safety at work is an issue.

Canopus Plus® is also widely used for heavy foot traffic applications.



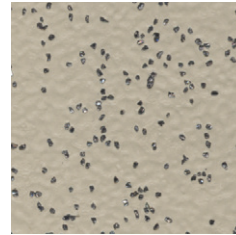
Camel

CPLUS - 12



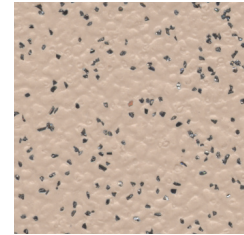
Light Beige

CPLUS - 09



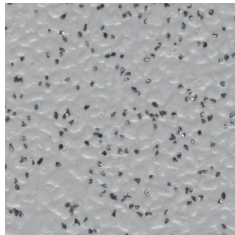
Sand

CPLUS - 10



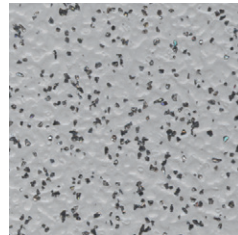
Peach Carnation

CPLUS - 11



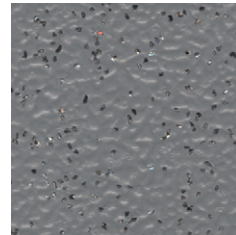
Smoke

CPLUS - 02



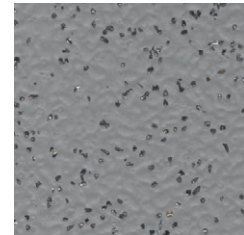
Rolling Stone

CPLUS - 01



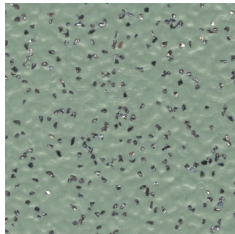
Grey Town

CPLUS - 04



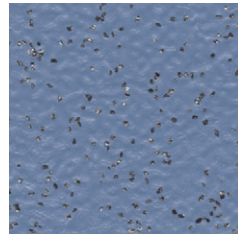
Pewter

CPLUS - 03



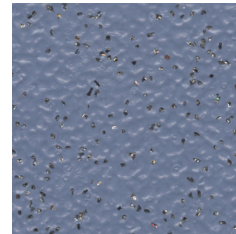
Mint

CPLUS - 14



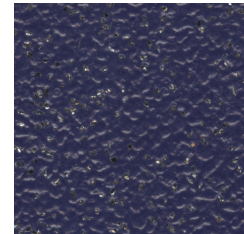
Arctic Blue

CPLUS - 06



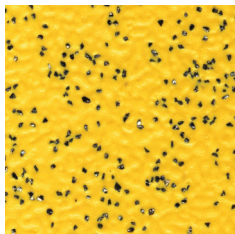
Lucky Sapphire

CPLUS - 07



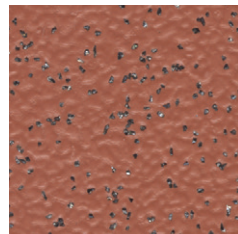
Ocean Blue

CPLUS - 08



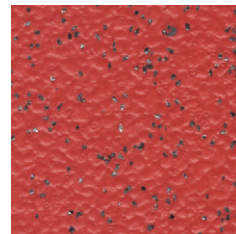
Sunny Sands

CPLUS - 16



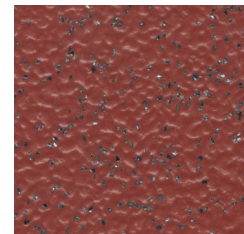
Clay

CPLUS - 17



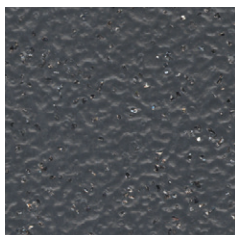
Rosette

CPLUS - 18



Merlot

CPLUS - 13



Iron

CPLUS - 05



Midnight

CPLUS - 15

Matching welding rods are available for every colour.

Printed shades may appear slightly different from actual samples.

Canopus Plus®

Anti-Slip - Phthalate Free



Characteristics	Standards	Units	Canopus Plus®
Phthalate Free			Yes
Indoor Air Quality	CA Section 01350 (≤ 0.5 mg / m ³)	Floorscore Certified (SCS - FS - 04547)	Yes
	ISO 16000-6, TVOC after 28 days	µg/m ³	< 10 (Fully compliant)
Description			
Type of floor covering	EN 13845 EN 13553	Classification	Safety Vinyl Flooring
General Performance	ISO 10874 - EN 685		34: Very Heavy Commercial 43: Heavy Light Industrial
Usage / Wear Resistance	BS EN 649	Group	T (≤ 2 mm ³)
Special Treatment			Anti-slip surface with silicon carbide granules. SureClean™
Overall Thickness	ISO 24346 - EN 428	mm	2.00
Weight	ISO 23997 - EN 430	g/m ²	3400
Sheet Size	ISO 24341 - EN 426	m (width)	2
		m (length)	20
		m ² (surface area)	40
Castor chair test	ISO 4918 - EN 425	Type of use	Continuous
Slip resistance	EN 13845	Wear Resistance Rating	ESf & ESb (≤ 10% particles lost over 50,000 cycles)
	DIN 51130	Ramp Test	R 11
	BS 7976 - 2	Wet Pendulum Test	36+ (Low Slip Potential)
	AS 4586 - 2013 Appendix A		P4
	EN 13893 ASTM D2047	Coefficient of friction	DS (< 0.30) Pass (0.70 Avg)
Dimensional stability	ISO 23999 - EN 434	%	≤ 0.40
Flexibility	ISO 24344 - EN 435	20mm mandrel	< 20
Seam Strength	ISO 16906	N/50mm	Pass
Residual indentation	ISO 24343 - 1 - EN 433	mm	≤ 0.10
	ASTM F970	psi	800
Colour fastness to light	EN ISO 105 - B02	Degrees	≥ 6
	ASTM F1515	ΔE ≤ 800 after 300 hours (colour change)	Pass
Static electrical propensity	EN 1815	kV	< 2.0
Thermal resistance	EN 12667	m ² k/W	Approx 0.01m ² k/W (suitable at 27°C)
Heat Stability	ASTM 1514	ΔE ≤ 0.80 (colour change)	Pass
Reaction to fire	EN ISO 9239-1	kW/m ²	≥ 8
	EN ISO 11925-2		Pass
	EN 13501-1 : 2007+A1	Class	Bfl - S1
	ASTM E 648	Type	1
Smoke density	ASTM E 662	Dm	< 450
Stain & chemical resistance	ISO 26987 - EN 423	Index	0 (Excellent resistance)
Maritime usage	IMO RES A 653 (16)		Annex 1 Part 2 (Smoke & Toxicity)
	IMO MSC 61 (67)		Part 5 (Spread of Flame) and Annexure 2
	Marine Equipment Directive		1121

