

RESPONSIVE

We listen. We're responsive.

Electra®

Anti-Static

2018



Special Features



CERTIFIED BY
SCS Global Services

ISO 16000 - 6

Applications

- Server rooms
- Computer rooms
- Electronic manufacturing units
- Radiotherapy and lab areas
- Electronic equipment rooms
- Shop floors
- Clean industries

Product Description

Electra® is a dissipative, anti static (< 2 kV), flexible homogeneous floor covering in 2.00 thickness, available in both sheet and tile form, with permanent anti static properties (EN 1081) it acts as a continuous dissipater ($10^6 \leq R_t \leq 10^8$).

Electra® is available in sheets 2.00m wide, complies with the European norm EN 649 (34-43) and has excellent resistance to static and rolling loads.

Electra® is VOC (≤ 12 Chronic REL) and formaldehyde compliant ($\leq 9.0 \mu\text{g}/\text{m}^3$) according to the CDPH/EHLB/Standard, Method V1.1-2010 (certificate 120316-01).

Electra®

Anti-Static



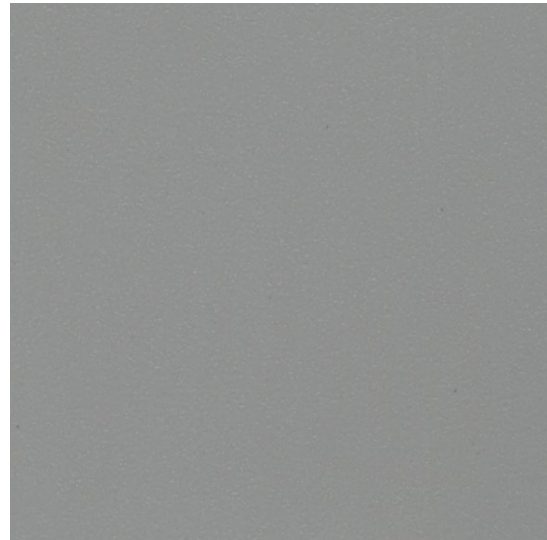
Protect Your Equipments

For the sensitive requirements of manufacturing and service industries, our anti-static flooring fulfills the quality requirements. They can be used for computer and call centres, operation theatres, ICU's and diagnostic centres. We provide the safest anti-static flooring available in the market.



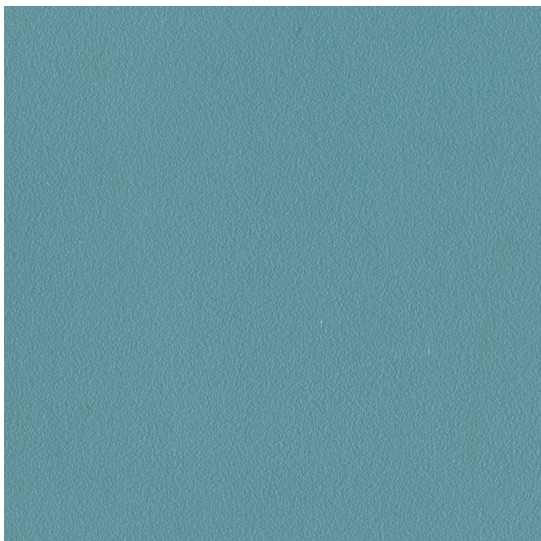
Antelope

2759-802-4



Soft Grey

2759-806-4



Arctic Shadow

2759-803-4



Carbon Copy

2759-804-4

Matching welding rods are available for every colour.

Printed shades may appear slightly different from actual samples.

Electra®

Anti-Static



Characteristics	Standards	Units	Electra®
Indoor Air Quality	CA Section 01350 (≤ 0.5 mg / m ³)	Floorscore Certified (SCS - FS - 04547)	Yes
	ISO 16000-6, TVOC after 28 days	$\mu\text{g}/\text{m}^3$	< 10 (Fully compliant)
Classification	EN 649	Group P	Anti-Static Vinyl Flooring
General performance	ISO 10874 - EN 685	Classification	34: Very Heavy Commercial 43: Heavy Light Industrial
Overall thickness	ISO 24346 - EN 428	mm	2.00mm
Thickness of wear layer	ISO 24340 - EN 429, ASTM F410	mm	1.00mm
Weight	ISO 23997 - EN 430	g/m ²	3200
Sheet size	ISO 24341 - EN 426	m (width)	2
		m (length)	15
		m ² (surface area)	30
Tile Size	ISO 24342	mm x mm	300 x 300 500 x 500 610 x 610
Abrasion resistance	EN 660 - 2	Group	P
	EN 660 - 2	Volume loss mm ³	<4
Castor chair test	ISO 4918 - EN 425	Type of use	Continuous
Slip resistance	DIN 51130	Ramp Test	R9
Dimensional stability	ISO 23999 - EN 434	%	≤ 0.40
Flexibility	ISO 24344 - EN 435	20mm mandrel	No cracking
Residual indentation	ISO 24343 - 1 - EN 433	mm	≤ 0.10
Colour fastness to light	EN ISO 105 - B02	Degrees	≥ 6
	ASTM F1515	$\Delta E \leq 800$ after 300 hours (colour change)	Pass
Static electrical propensity	EN 1815	kV	< 2.0
Electrical resistance	EN 1081	Ω	< 10⁹ (Anti-static)
Heat Stability	ASTM 1514	$\Delta E \leq 0.80$ (colour change)	Pass
Reaction to fire	EN 13501-1 : 2007+A1	Class	Bfl-S1
	ASTM E 648	Type	1
Smoke density	ASTM E 662	Dm	< 450

